

BIOKARELIA



**Online forest fire and biodiversity
management tools for handling cross-
border fires**

Vesa Leppänen
CTO

vesa.leppanen@arbonaut.com

arbonaut

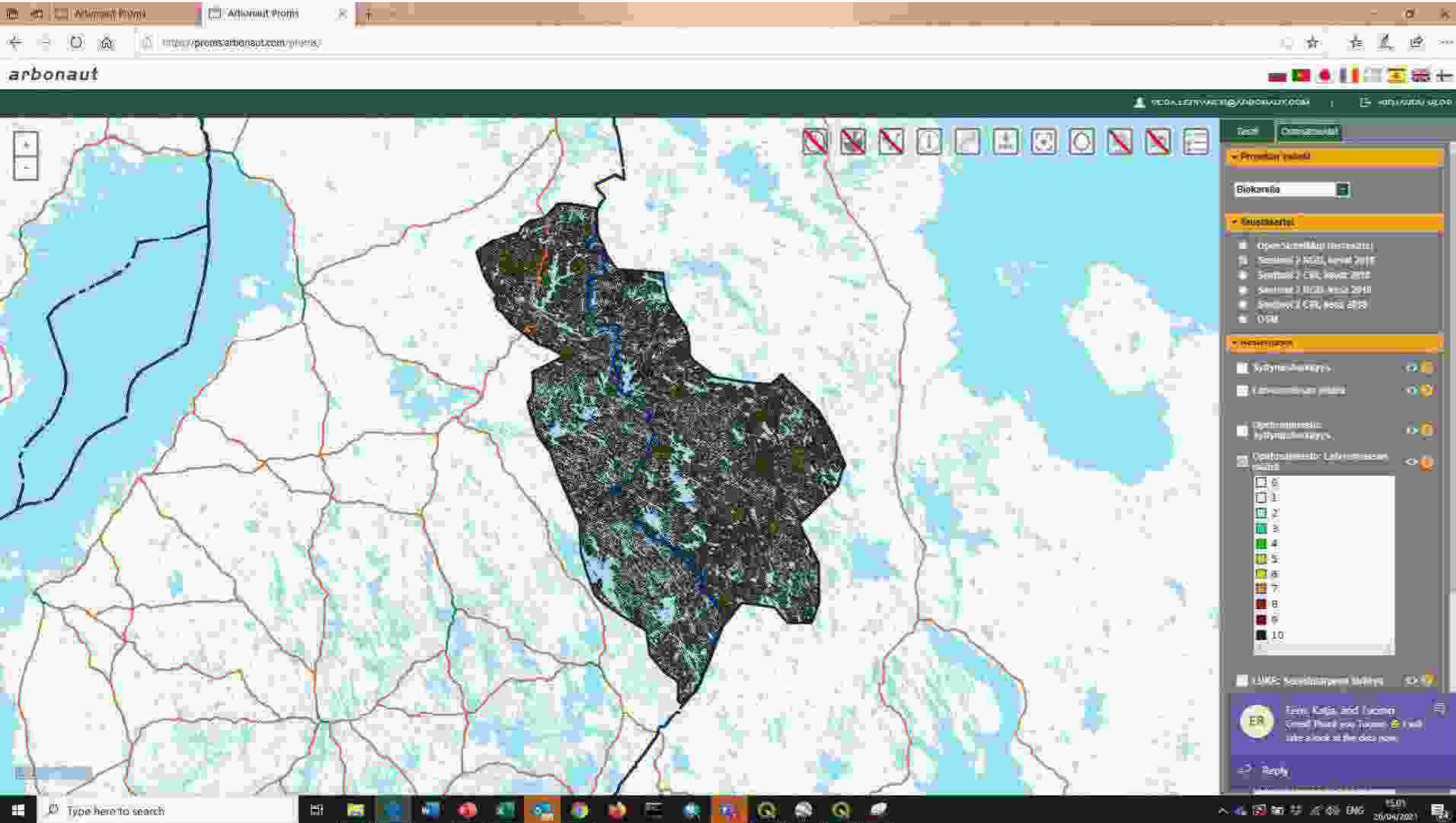


Karelia CBC is a cross-border cooperation programme creating an attractive region for people and business.

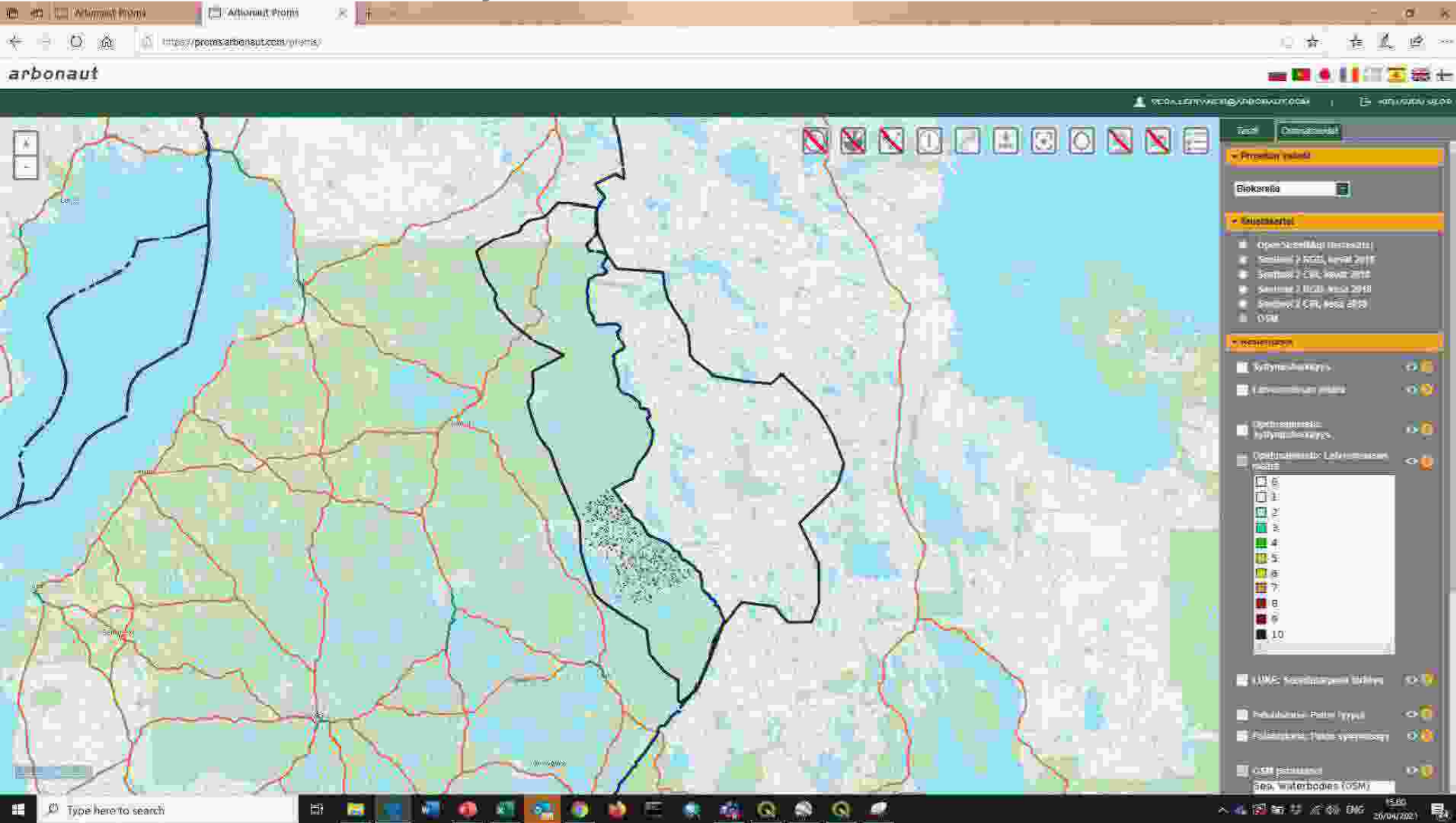
[https://proms.arbonaut.com/
biokarelia_demo
rO7FjyZOryRh](https://proms.arbonaut.com/biokarelia_demo_rO7FjyZOryRh)

Canopy fuel connections over the Finnish-Russian border

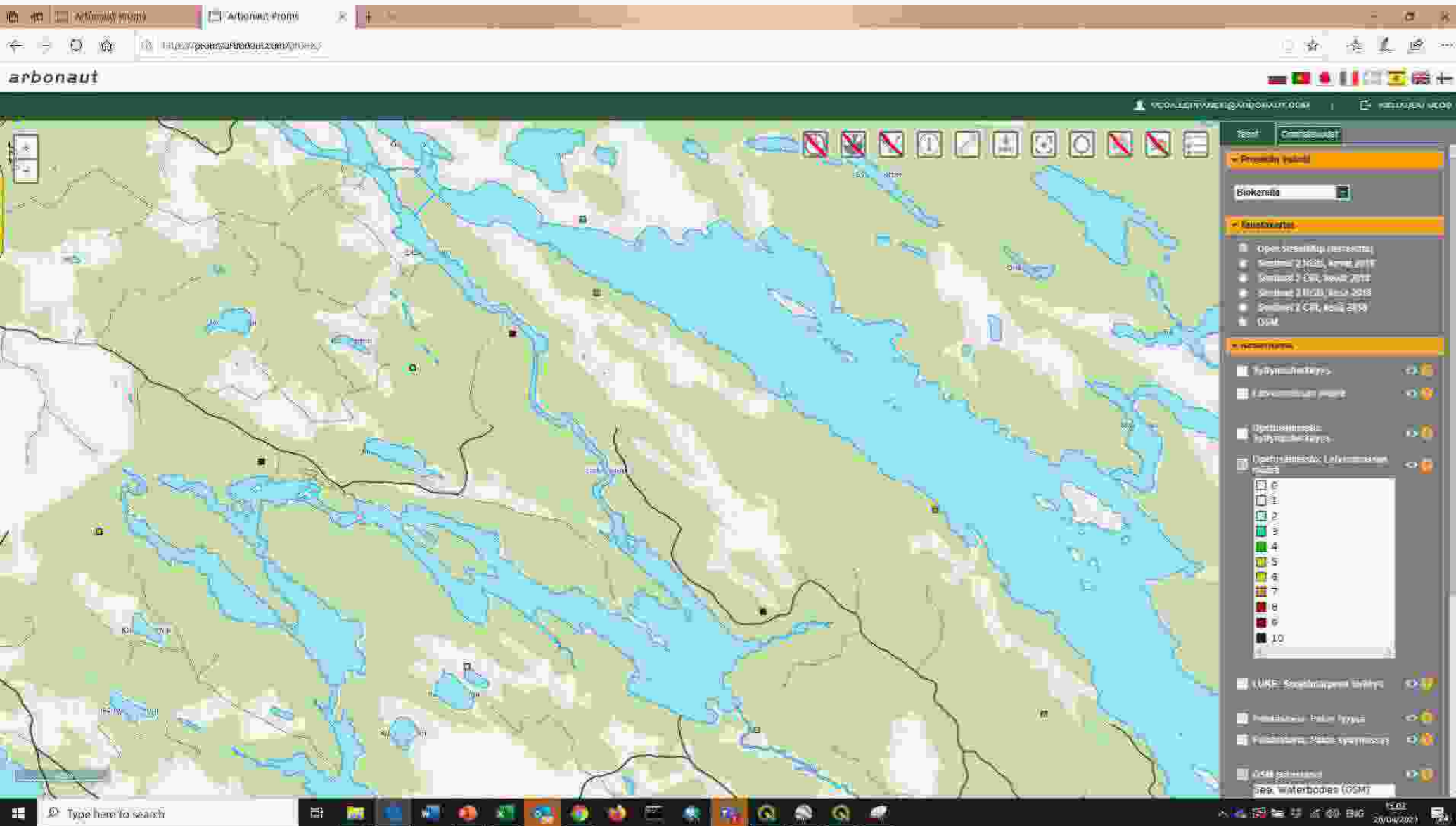
Target Area



Canopy Fuel Weight (CFW) training data available from LiDAR analysis

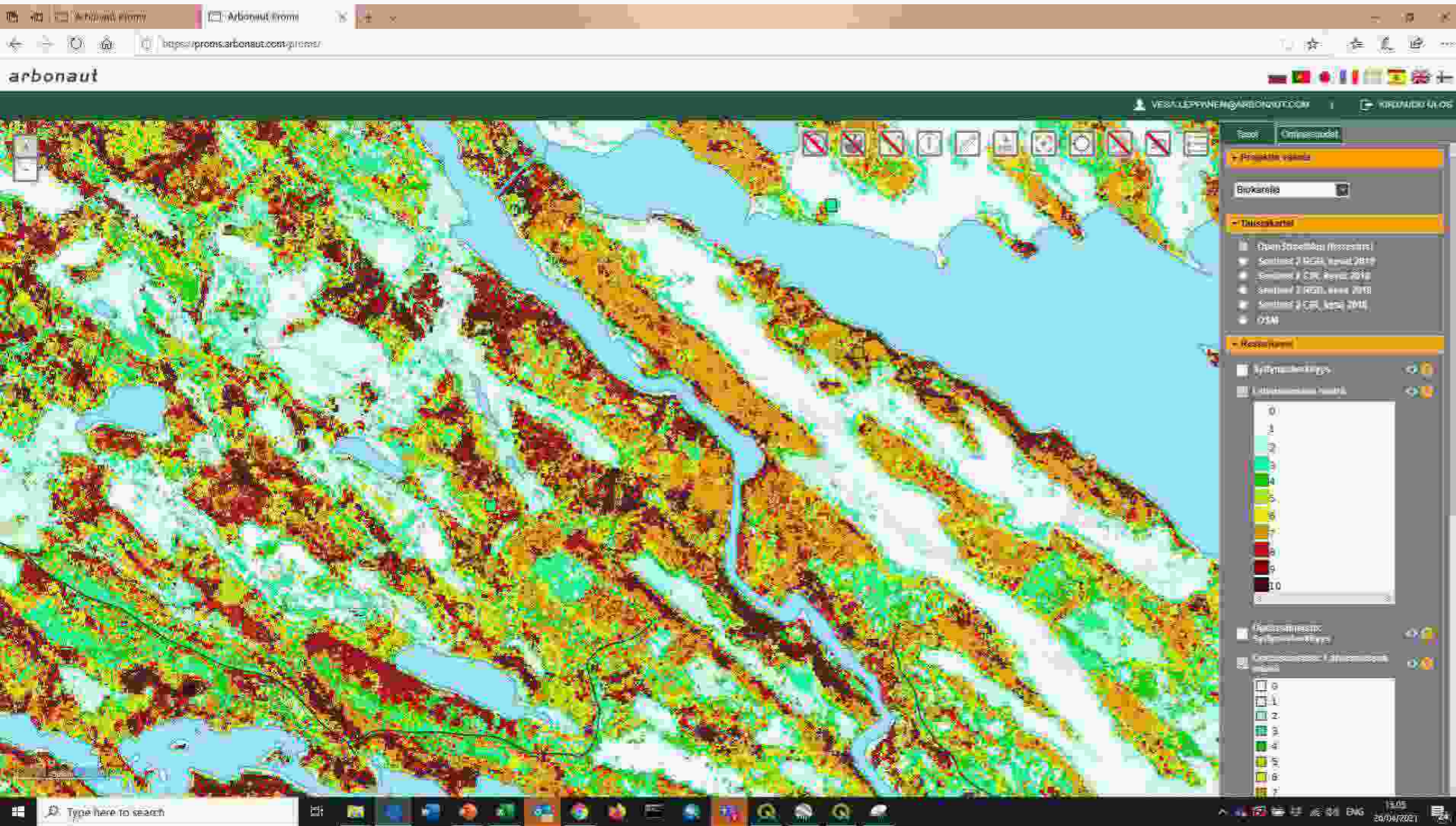


Detail on CFW training data

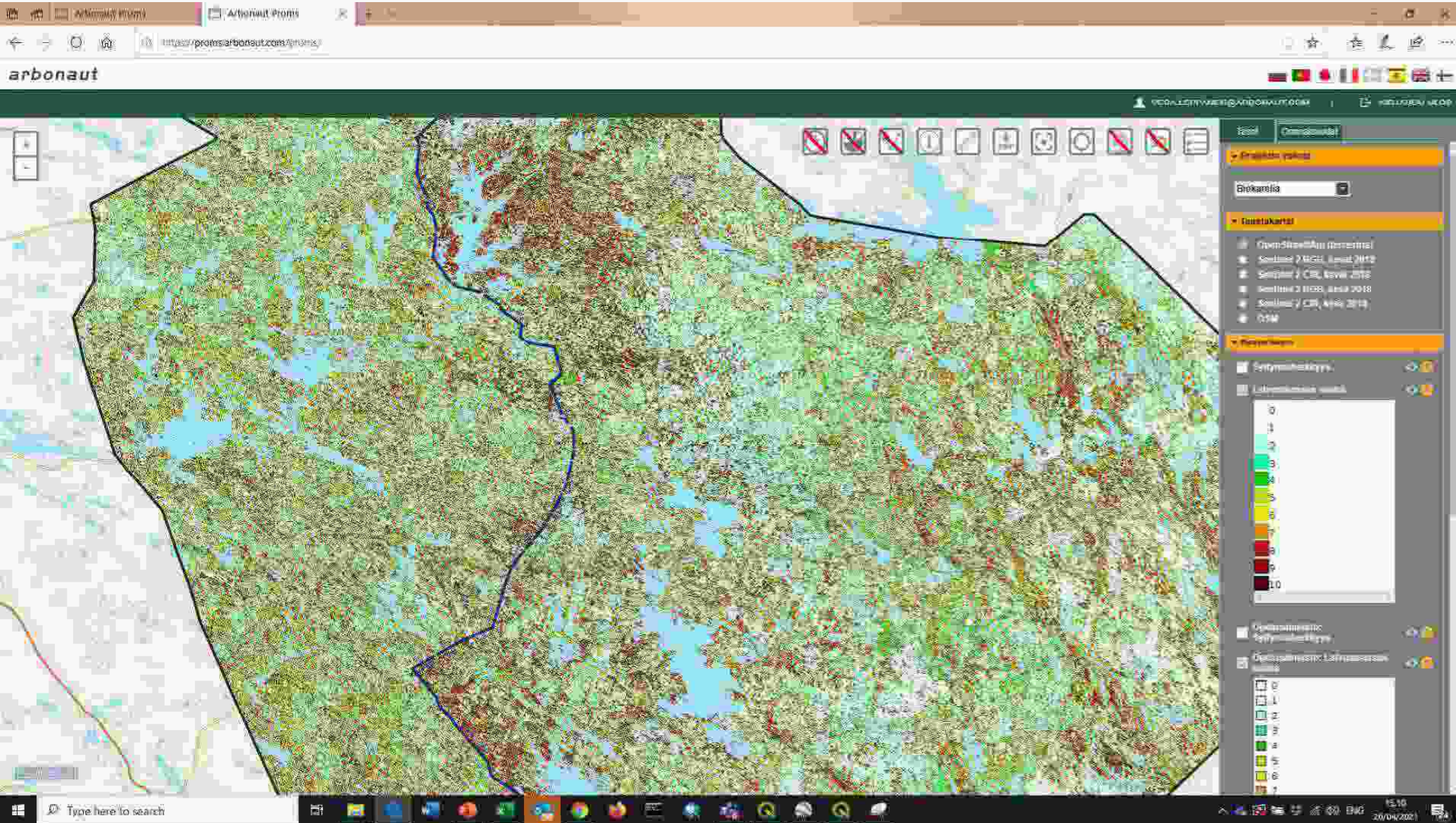


arbonaut

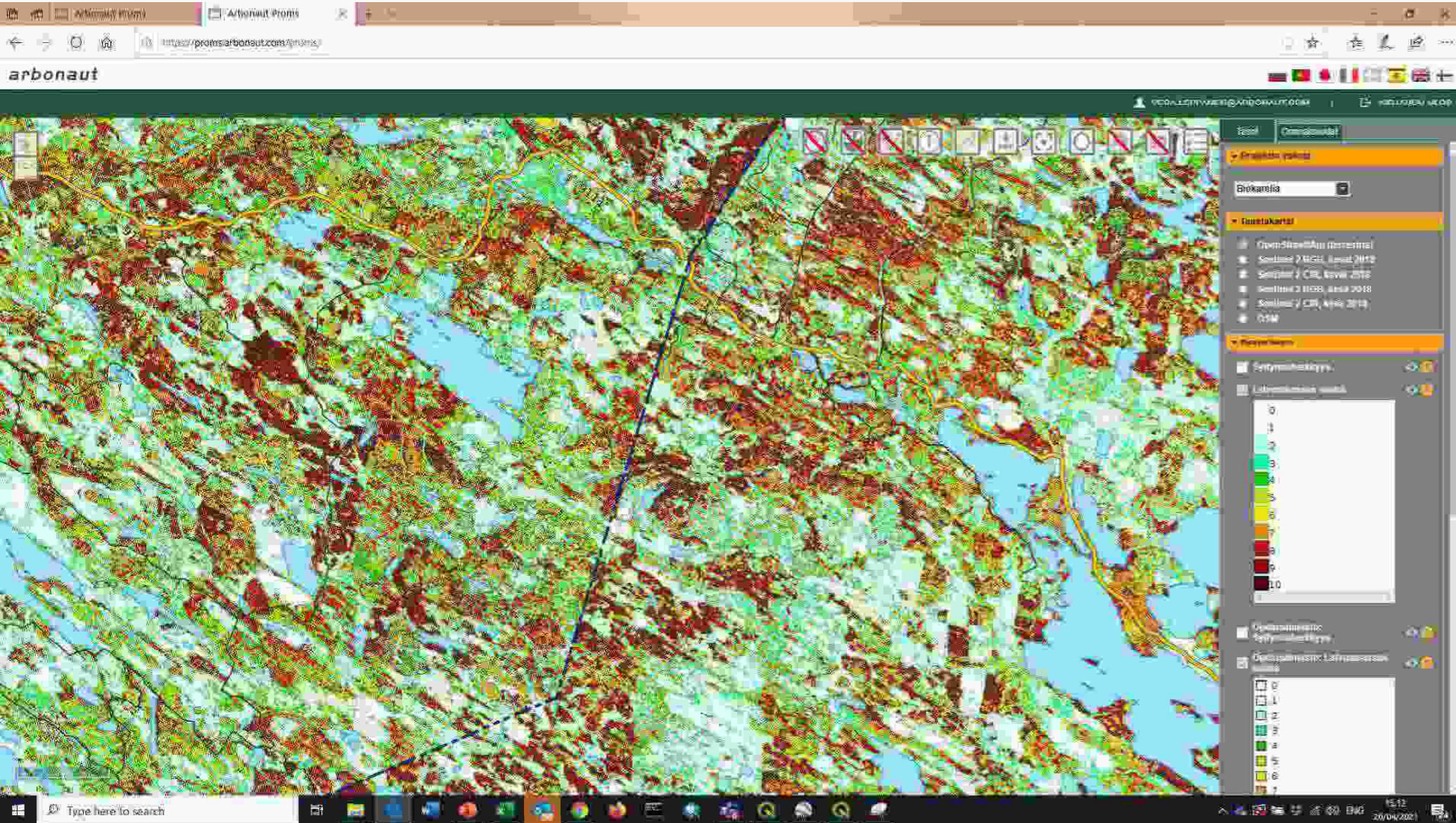
Resulting prediction using Sentinel 2 datasets and satellite-borne radar data as predictors



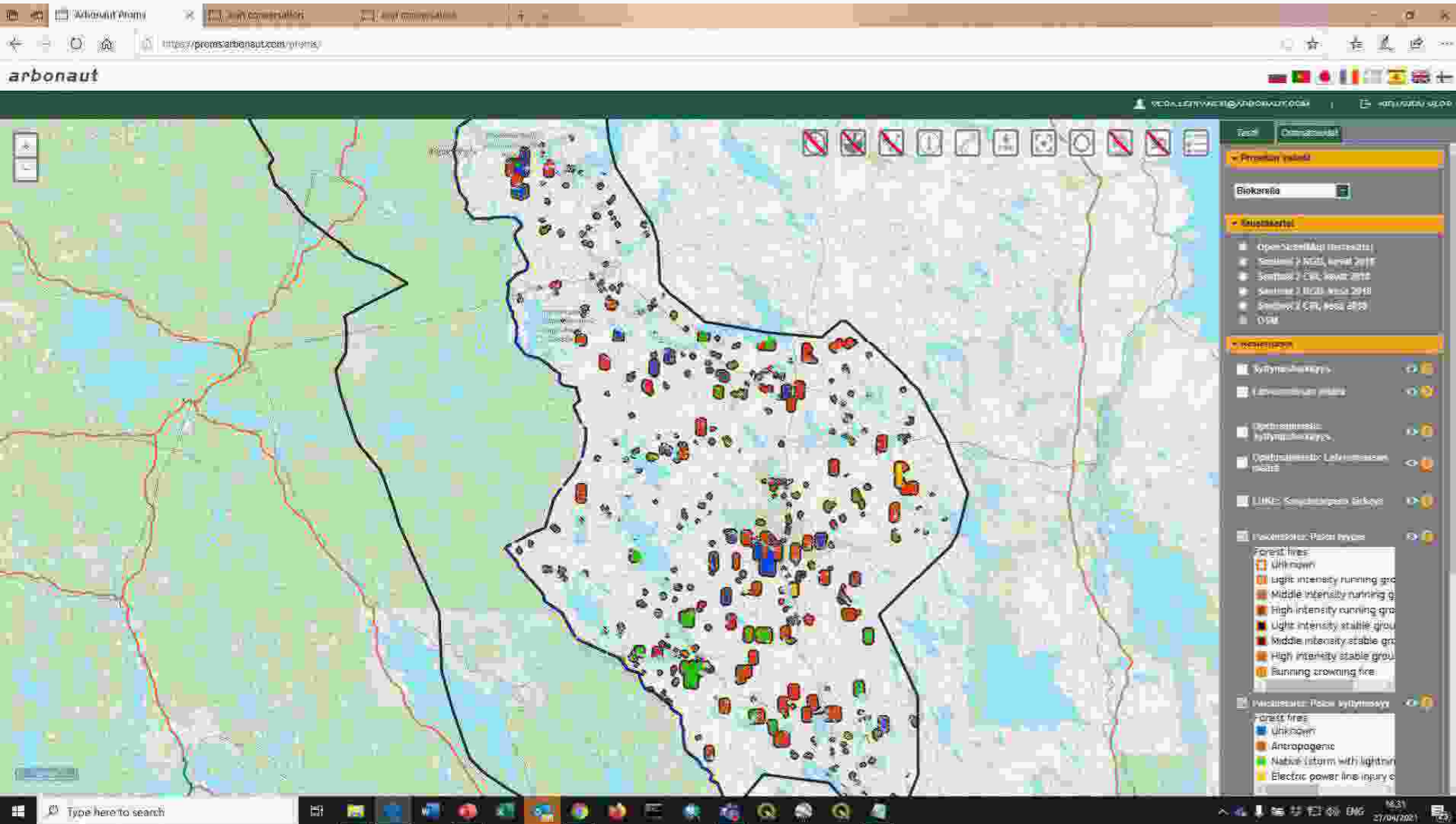
CFW map overview



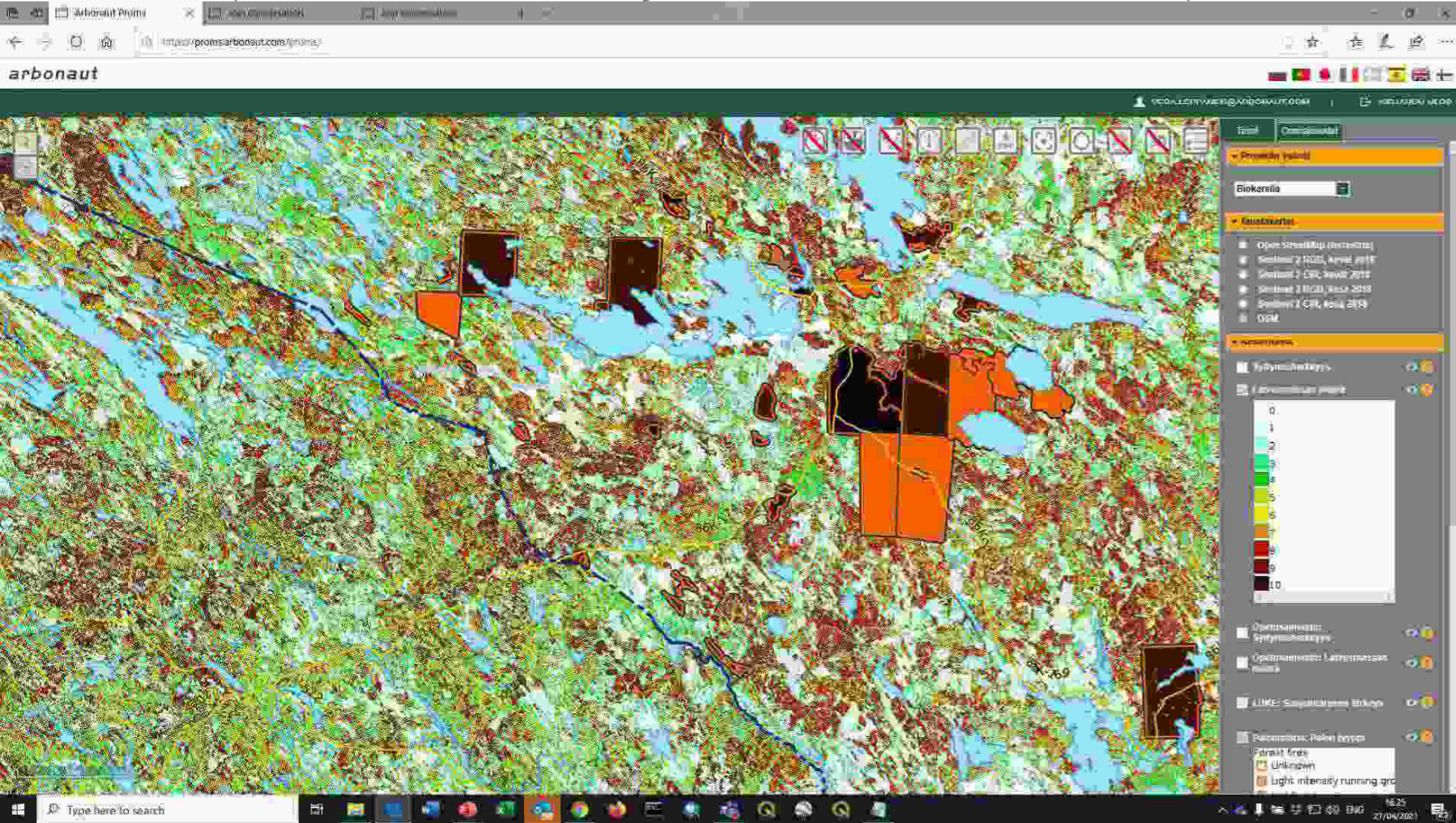
CFW map on the border area



Historical fires by cause in Russian side (Finnish fire history will be added later on)



CFW map on the border area; historical fires in Russian side (Finnish fire history will be added later on)

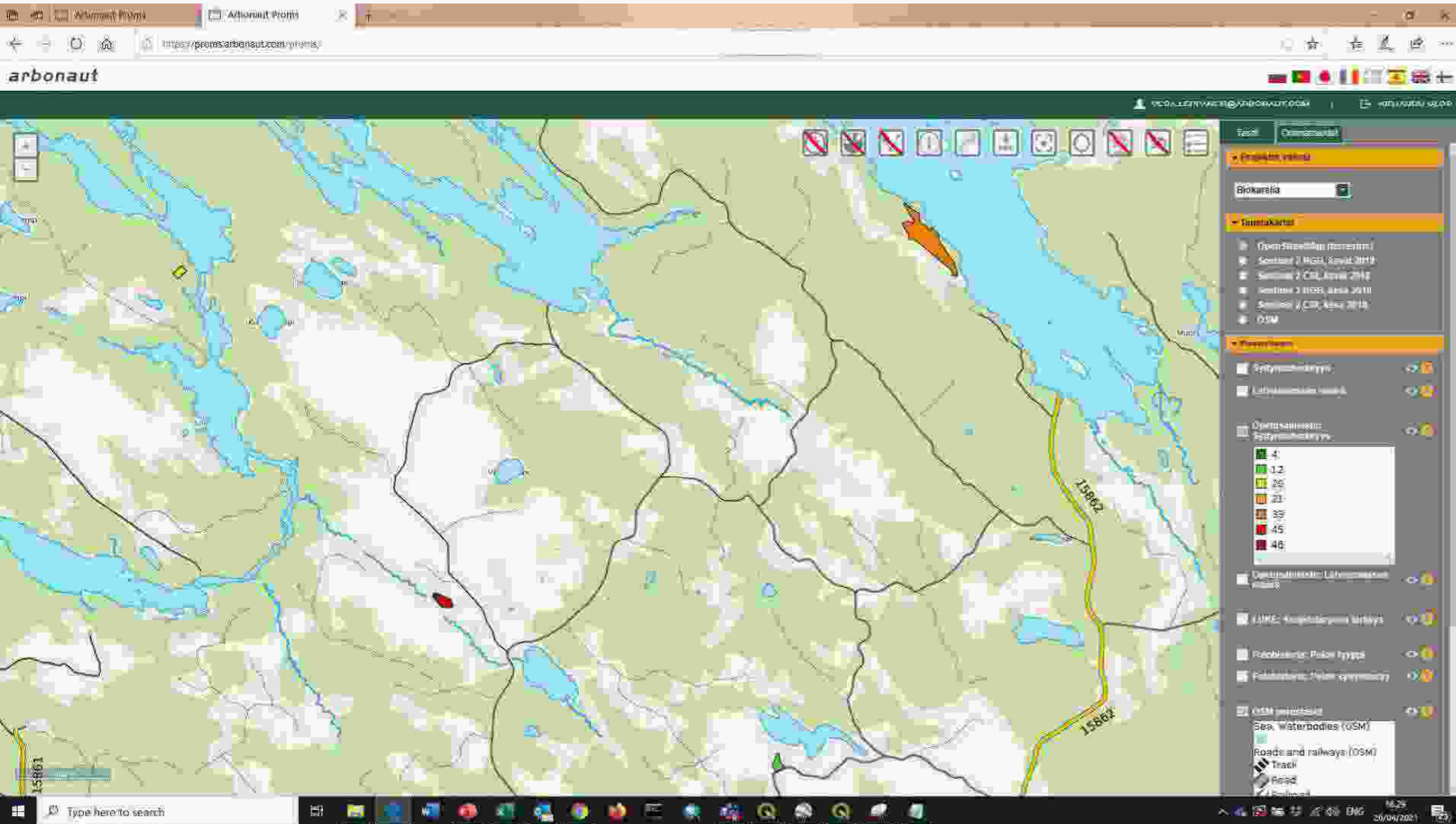


Ignition sensitivity map over the Finnish-Russian border

Ignition sensitivity training data available from LiDAR analysis

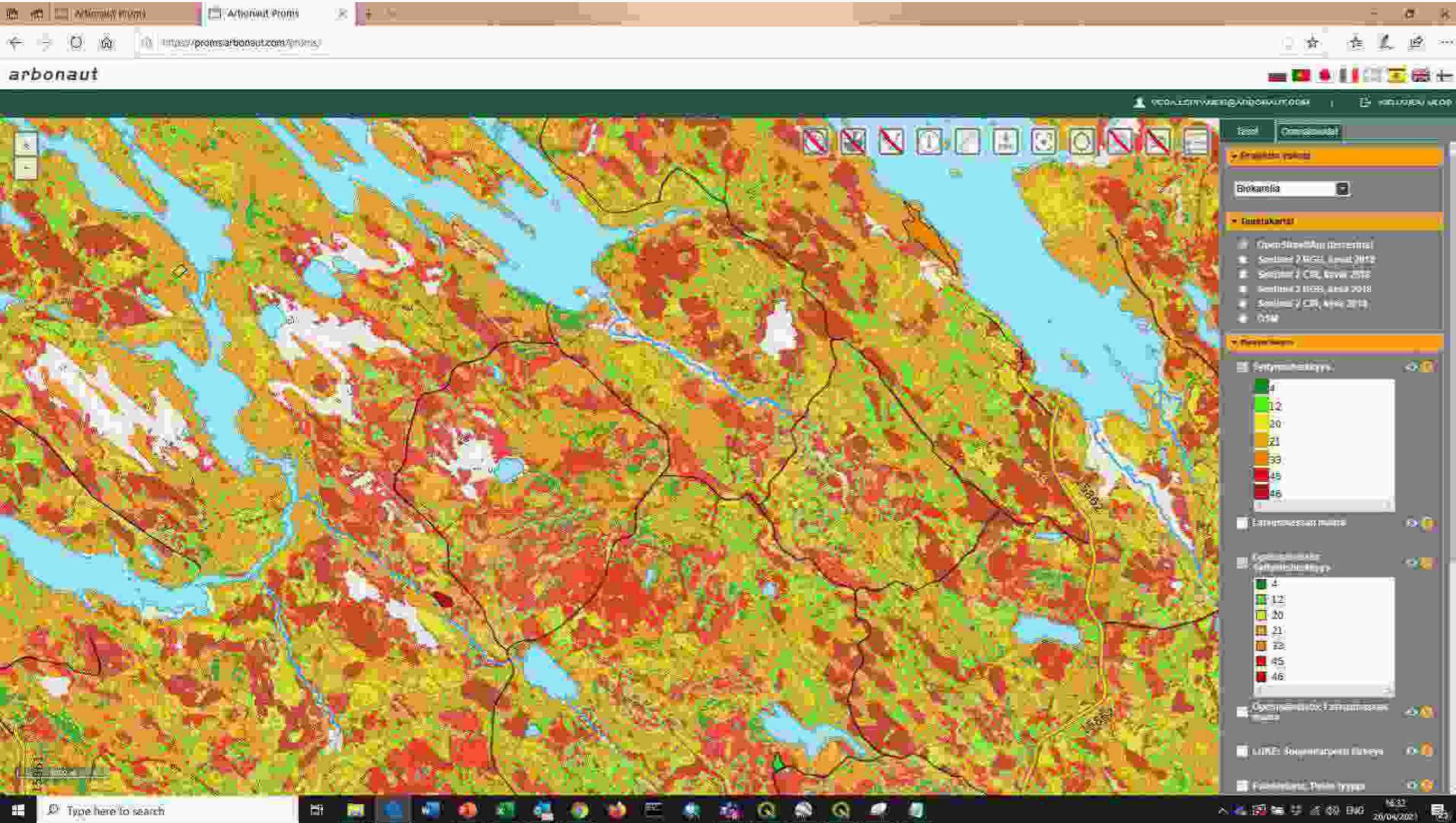


Detail on ignition sensitivity training data

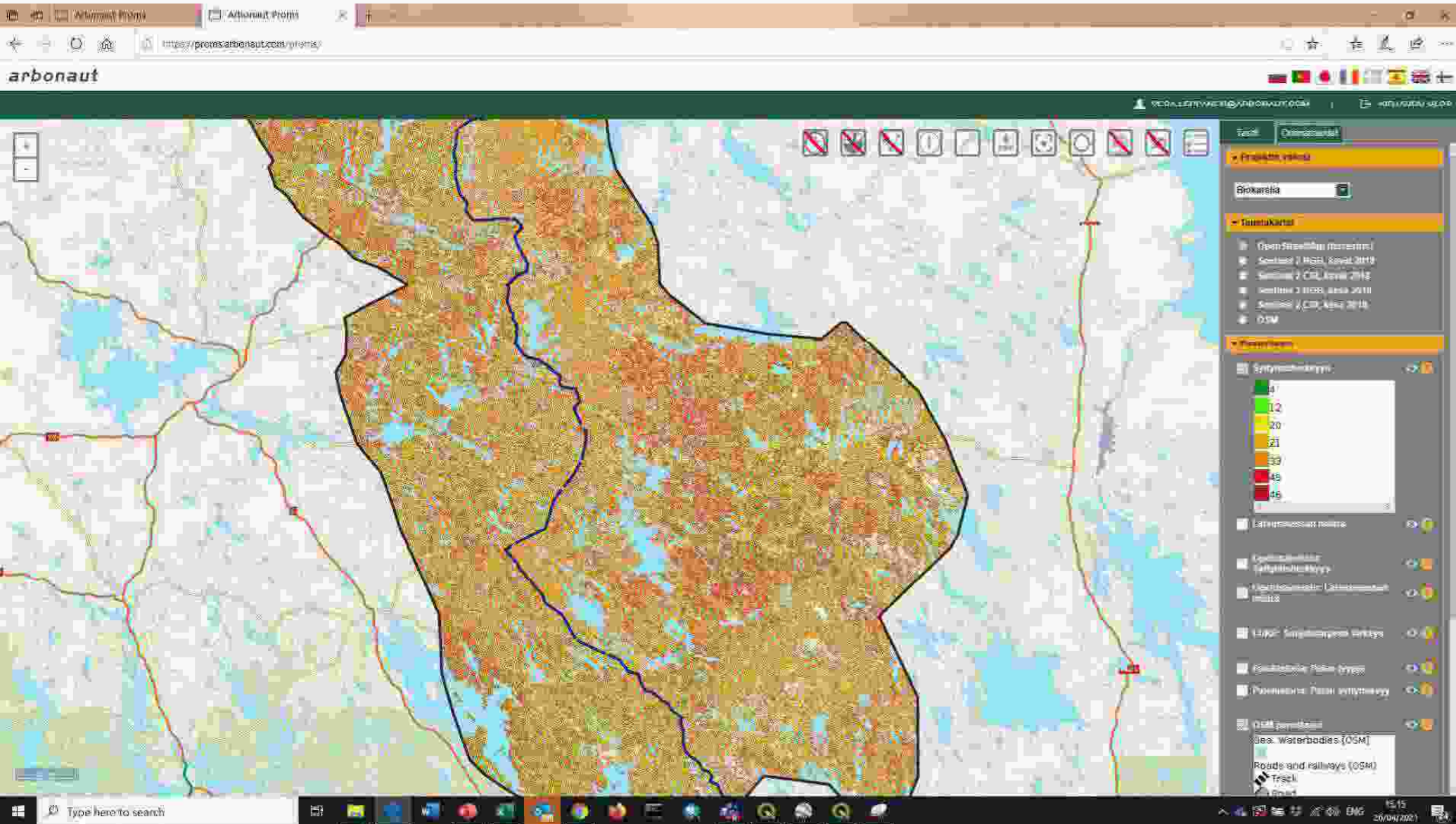


arbonaut

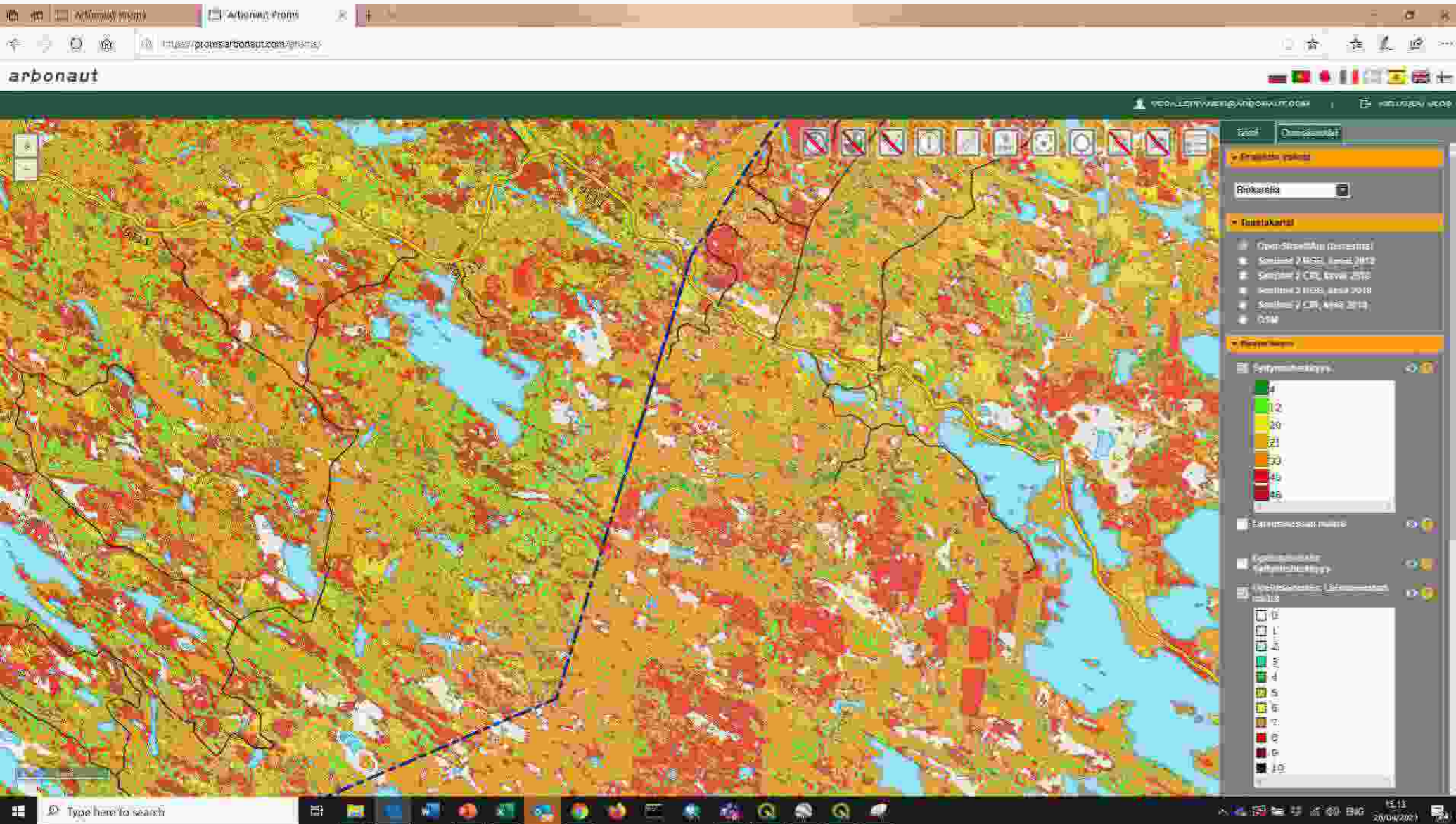
Resulting prediction using Sentinel 2 datasets and satellite-borne radar data as predictors



Ignition sensitivity map overview

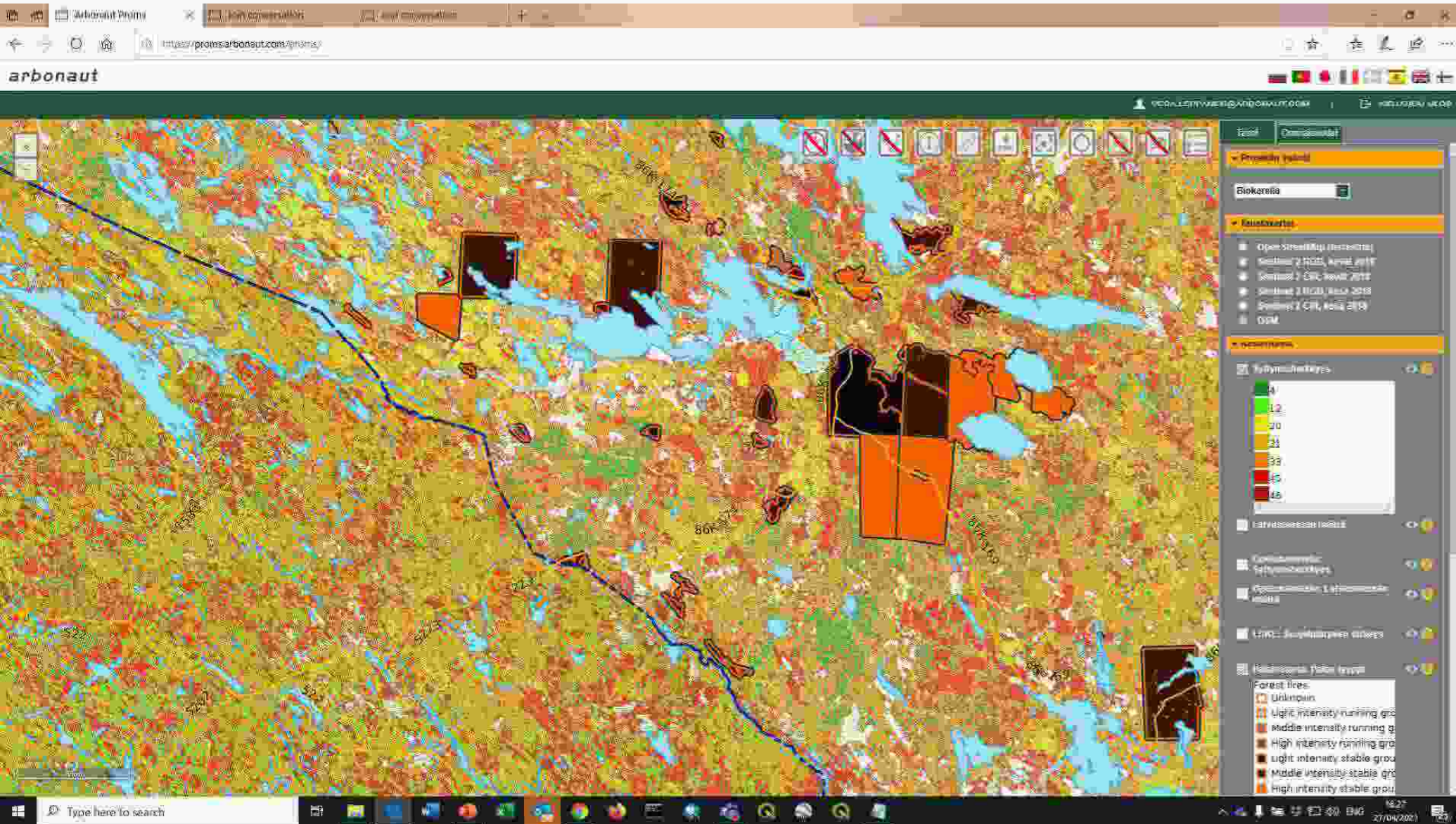


Ignition sensitivity map on the border area



arbonaut

Ignition sensitivity map on the border area; historical fires in Russian side (Finnish fire history will be added later on)





Thank you!